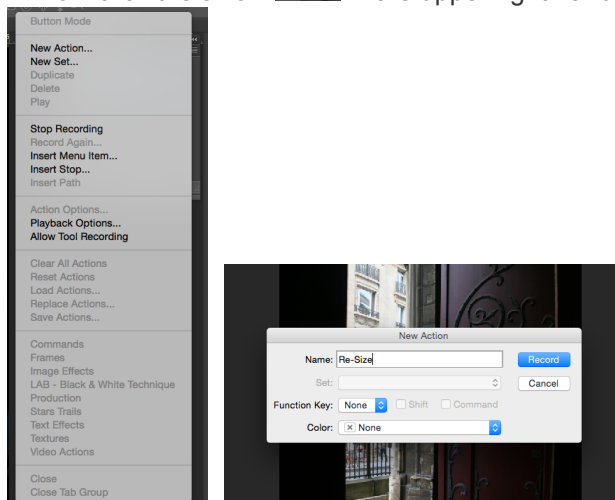


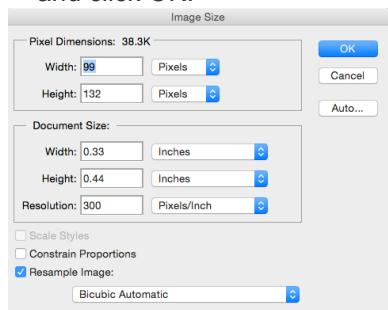
Collage-Creating Actions and Using a Script in PS

1. Go to the shared folder and drag and drop the “Windows & Doorways of Europe” folder onto your desktop.
2. Open Photoshop: Open up 1st image, File-> Open, click open.
3. Go to Windows > Actions. (If there are any actions in the palette delete them by placing them in the trash can.)

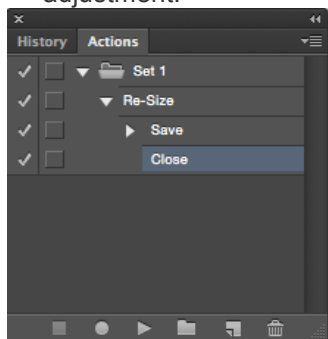
4. Now click the arrow  in the upper right hand corner of the palette and select “New Action...” Name the action Re-Size.



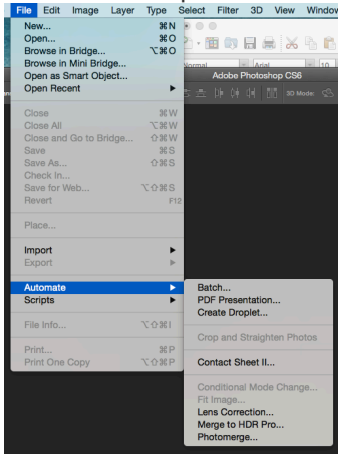
5. Make sure the record red circle is clicked at bottom of pallet
6. Now go to Image >Image Size check Resample Image, make the image size .33 inches X .44 inches at 300 pixels per inch and click OK.



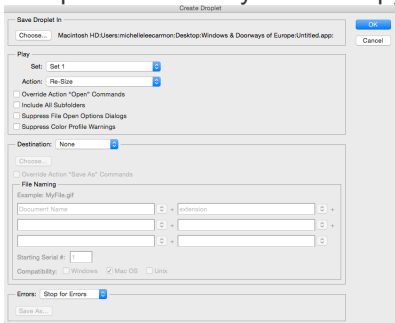
7. Save the image and close the file. Now go back to the Actions Palette and click stop. You've just recorded the image size adjustment.



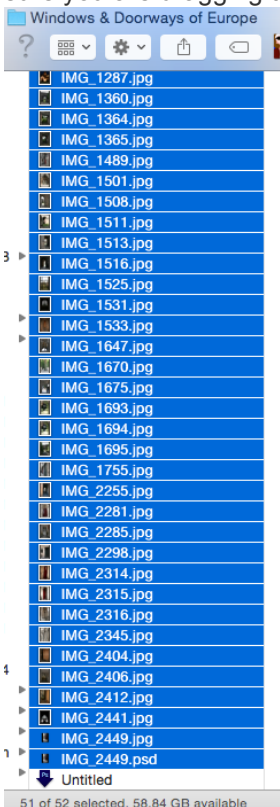
8. The next step will be to turn your action in to a droplet. Go to File->Automate->Create Droplet.



9. Click the Choose button and decide where you want to save your droplet (into the “Windows & Doorways of Europe” folder onto your desktop), select the re-size action you've just created and click OK.

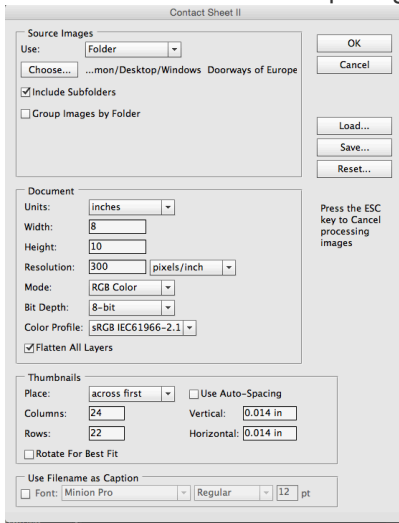


10. Now go back to the new folder of copied images you created, select them all and drag them over the Droplet icon. Make sure you are dragging the copies! This will convert each image to .33 X .44 inches.

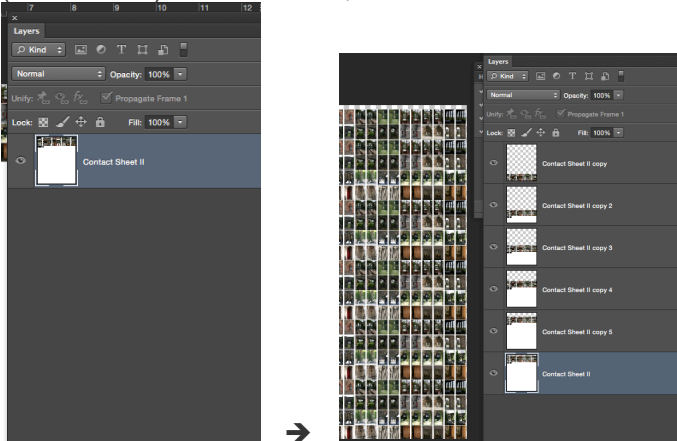


11. Now that all the images have been reduced to their smaller size, it's time to make the mosaic. To do this click File>Automate>Contact Sheet II.

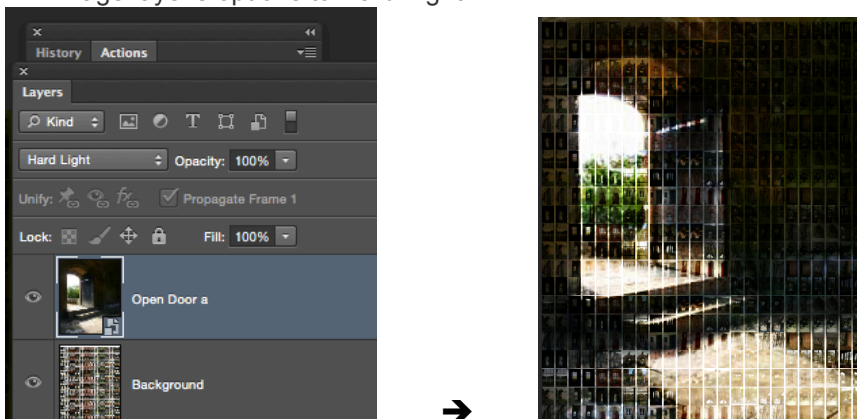
12. Select the images (All 50 images from the "Windows & Doorways of Europe" folder). Enter the measurements you 8 X 10 inches and 300ppi. Now decide how many rows. Enter 24 columns and 22 rows and check the Flatten All Layers box. Make sure to uncheck Auto Spacing (there is no spacing between the images). Uncheck Filename as Caption. Click OK.



13. Here are the small images put together in the contact sheet. If you didn't have enough images, simply duplicate the layer (Command J) then move tool, to fill the canvas. Flatten the image after you have filled the canvas Layer>Flatten Image.



14. Now File > Place "Open Door" image and click OK. Hold down the shift key and size the picture to fill the frame. Set this image layer's options to Hard Light.



14. SAVE