

## More Advance Selections

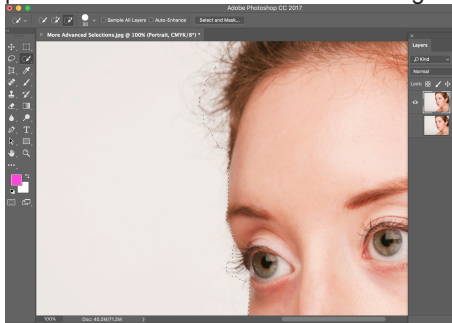
Discover how to add fine details to your selections, like wispy hairs and eyelashes

The intelligent “Quick Selection” tool can work out what subject you're trying to select as you paint over it. If it does get confused, you can call on the help of the “Add To” and “Subtract from” icons in the options bar to fine-tune the selection. Clever though it is, the “Quick Selection tool can sometimes find it difficult to locate the edges of your subject. This is especially true if there's minimal contrast between the subject and the background, or if there's any softness to your subject caused by a shallow depth of field. It will also find it a challenge to include delicate edge details like hair and eyelashes - even if they are overlapping a uniformly plain white studio backdrop! For this portrait shot, we ran the “Quick Selection” tool over the white background and then inverted the selection so the marquee was around the model. However, by zooming in for a closer look at the selection we could clearly see that the marquee didn't include the model's eyelashes or her out-of-focus wispy hairs. So we used the “Refine Radius” tool to add these details to the selection. We then turned the refined selection into a layer mask so we could fine-tune it by applying brush tips to hide or reveal relevant details.

### Including Fine Details in a Selection

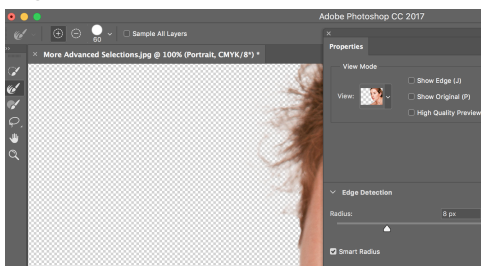
#### 1. Create a Selection

Open the “More Advanced Selections.jpg” portrait. Duplicate the “Background” layer and turn off the background layer. Rename “Layer 1” to “Portrait.” Use the “Quick Selection” tool to paint over the background. Tick “Subtract from Selection” and paint over the hairs. This creates a rough selection that also includes background pixels.



#### 2. The Refine Edge Tool

From the menu bar go to “Select > Inverse.” Click “Select and Mask” and set the View Mode to On Layers. To restore hairs and hide background pixels, tick Smart Radius. Slide it to 7.5. Tick the “Refine Radius” tool icon. Set Size to 60. Paint over edge hairs.



### 3. Fine Tune the Selection

Set the contrast to 39. For a smoother selection, set Smooth to 10 and Feather to 1.4. Tick the Decontaminate Colors box and set Amount to 64%. Set Output to New Layer with Layer Mask and click OK.

