

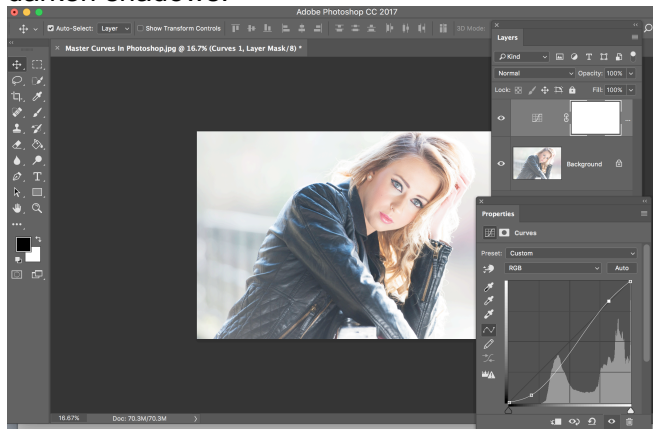


Master Curves In Photoshop

Use Curves, The Ultimate Tool For Tonal Control, To Add Punch and Enhance Portraits

1. Add Punch

Add a curves adjustment layer, and then drag the top part of the curve upwards to lighten the image. Click the bottom of the curve to add a second anchor point, and then drag this point downwards to darken shadows.



2. Tweak the Colors

Add a second curves layer, and then choose blue from the drop-down menu. Drag the bottom-left point upwards to add blue to the shadows, and the top-right point down to add yellow to the highlights.

